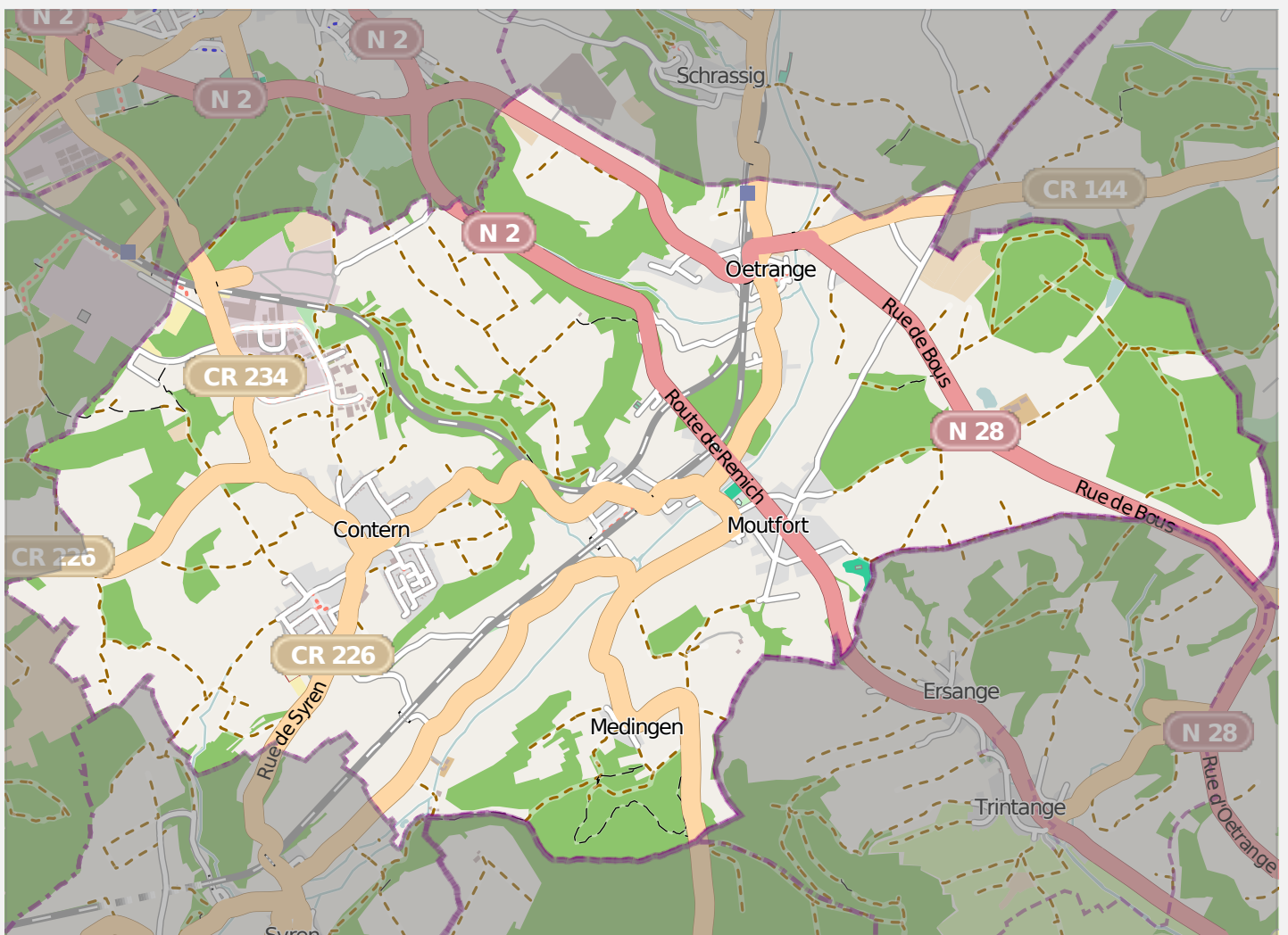


# Ceci n'est pas Paris



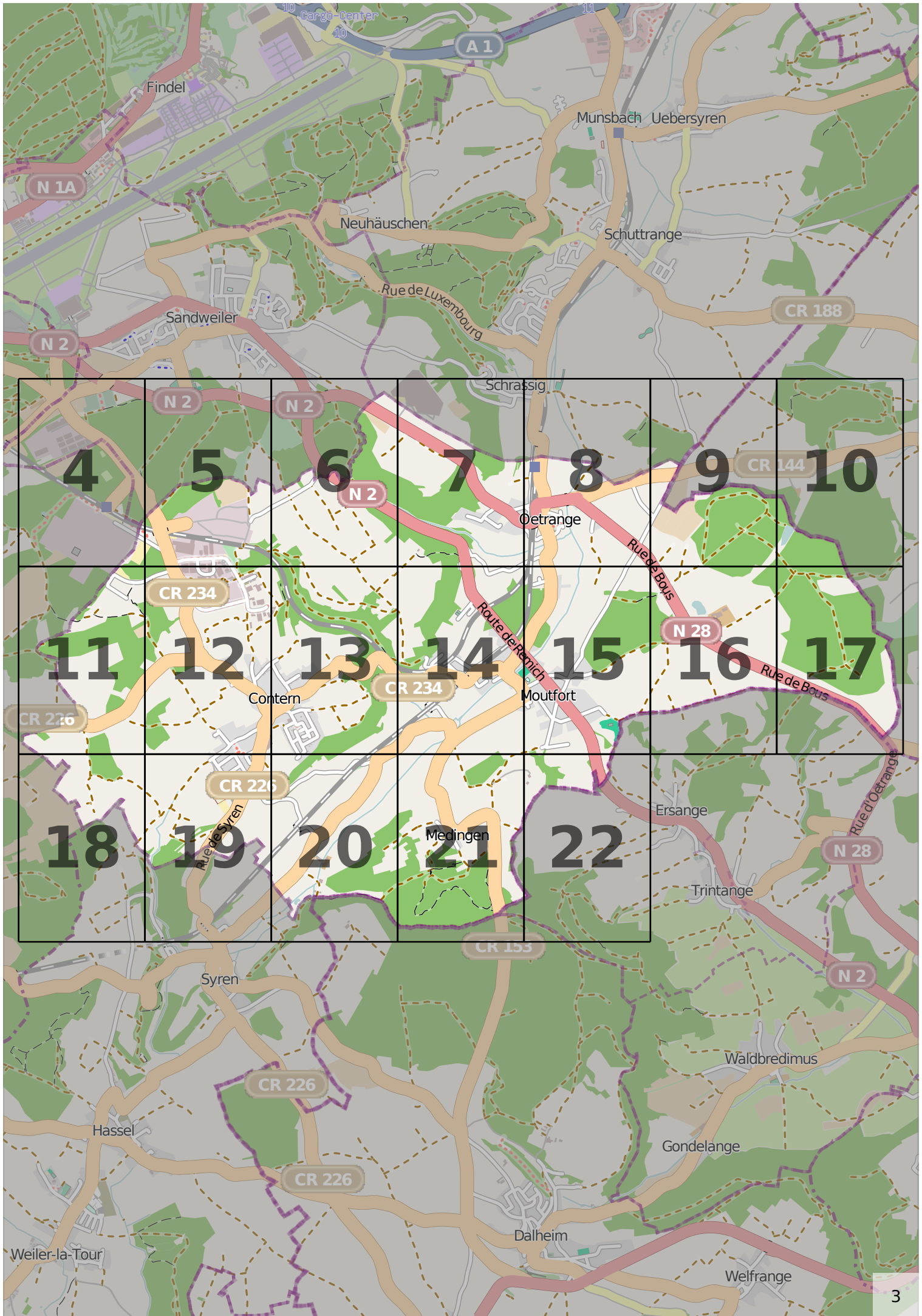
Copyright © 2014 MapOSMatic/OCitySMap developers.  
<http://www.maposmatic.org>

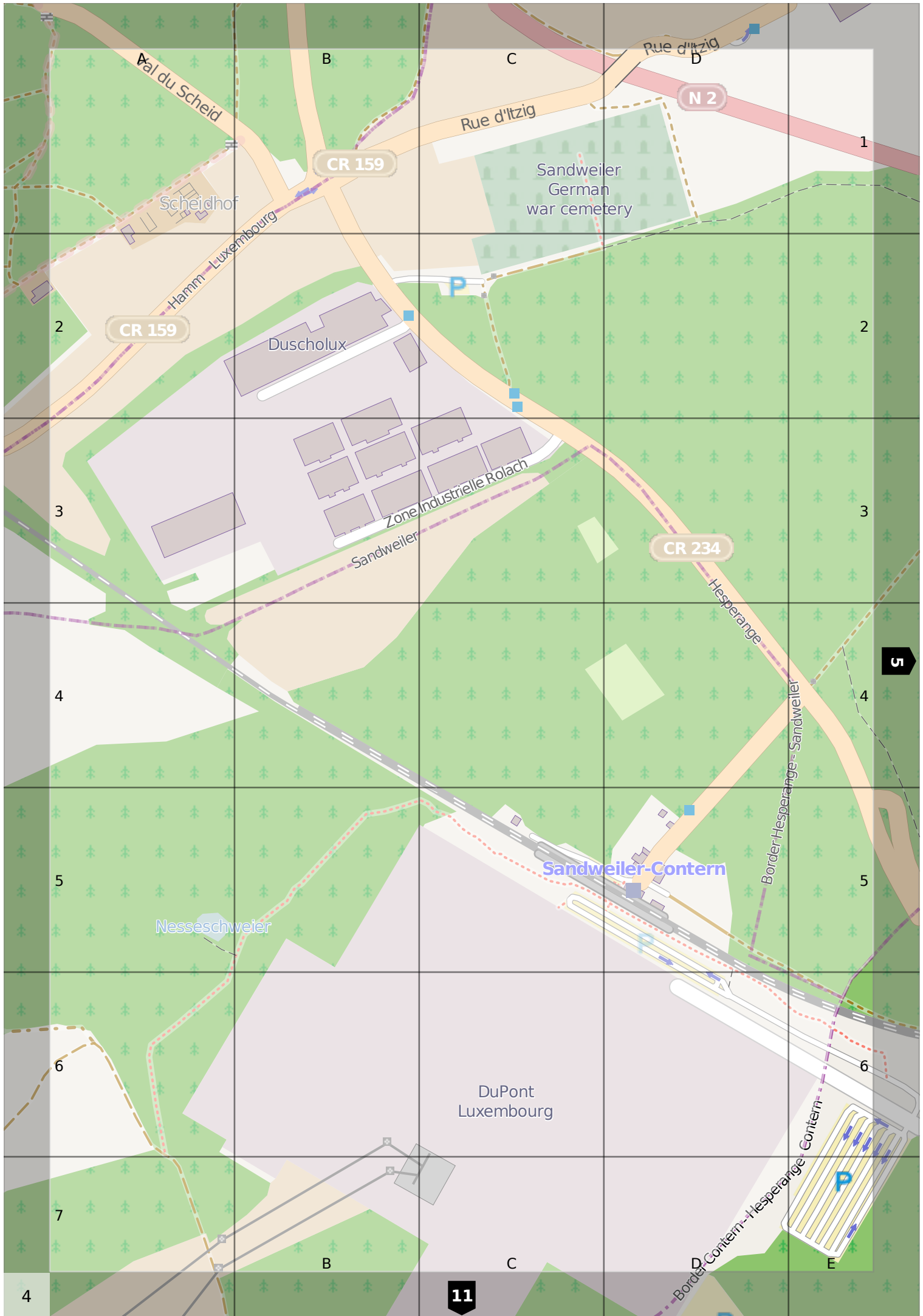
Map data © 2014 OpenStreetMap.org and contributors (cc-by-sa).  
<http://www.openstreetmap.org>

Map rendered on: 10 januari 2014. OSM data updated on: unknown.  
The map may be incomplete or inaccurate. You can contribute to improve this map.  
See <http://wiki.openstreetmap.org>



This page is intentionally left blank.





Val du Scheid

B

C

N 2

Rue d'ltzig

Rue d'ltzig

CR 159

Sandweiler  
German  
war cemetery

Scheidhof

Hamm  
Luxembourg

CR 159

Duscholux

P

2

2

3

3

Zone Industrielle Rolach

Sandweiler

CR 234

Hesperange

4

4

5

5

5

Sandweiler-Contern

Border Hesperange - Sandweiler

Nesseschweiler

6

6

DuPont  
Luxembourg

7

7

B

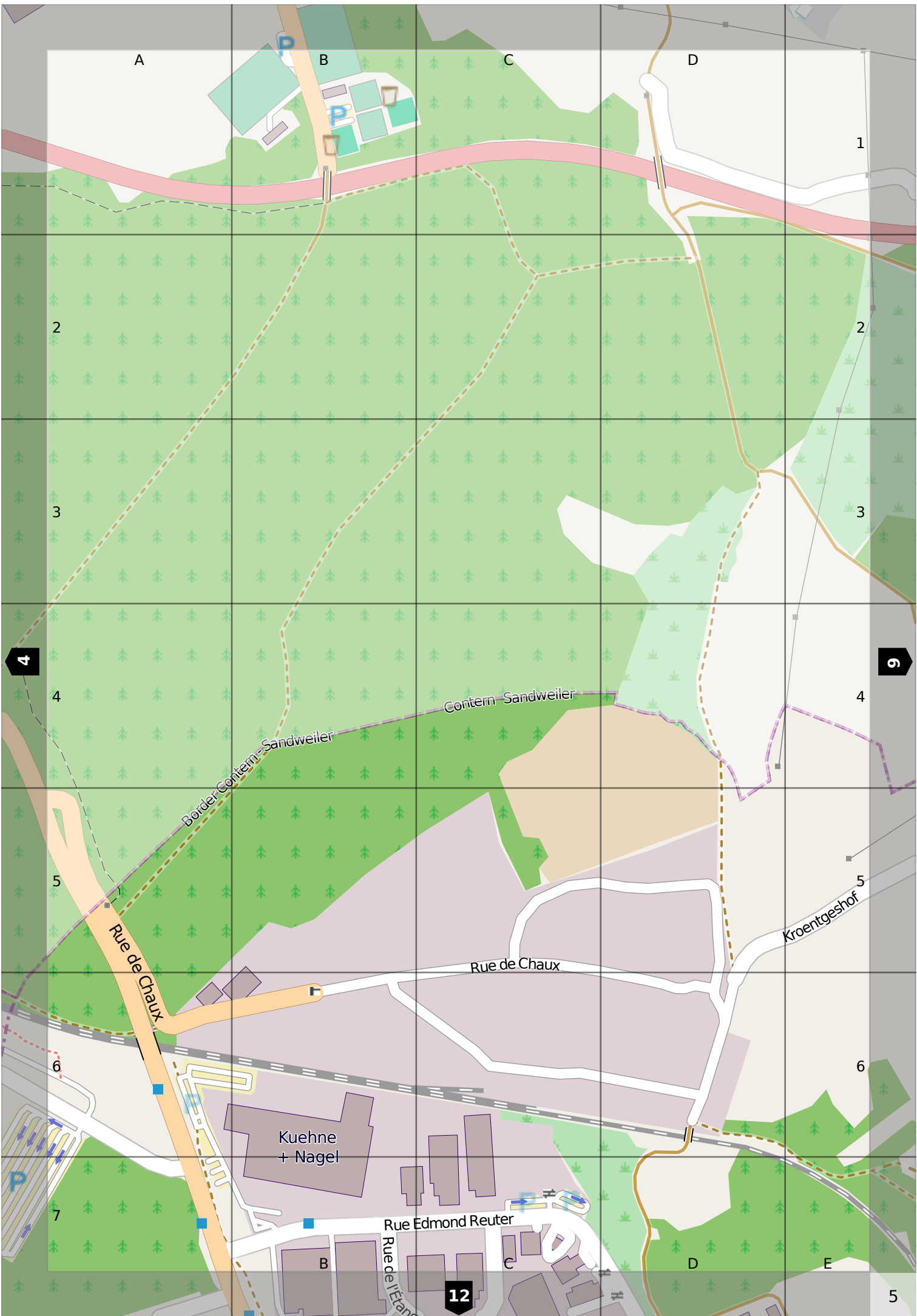
C

Contern

E

Border Contern - Hesperange

11



A

B

C

D

1

2

2

3

3

4

9

4

4

5

5

6

6

7

5

Contem Sandweiler

Border Contem Sandweiler

Rue de Chaux

Rue de Chaux

Kroentgeshof

Kuehne + Nagel

Rue Edmond Reuter

Rue de l'Étang

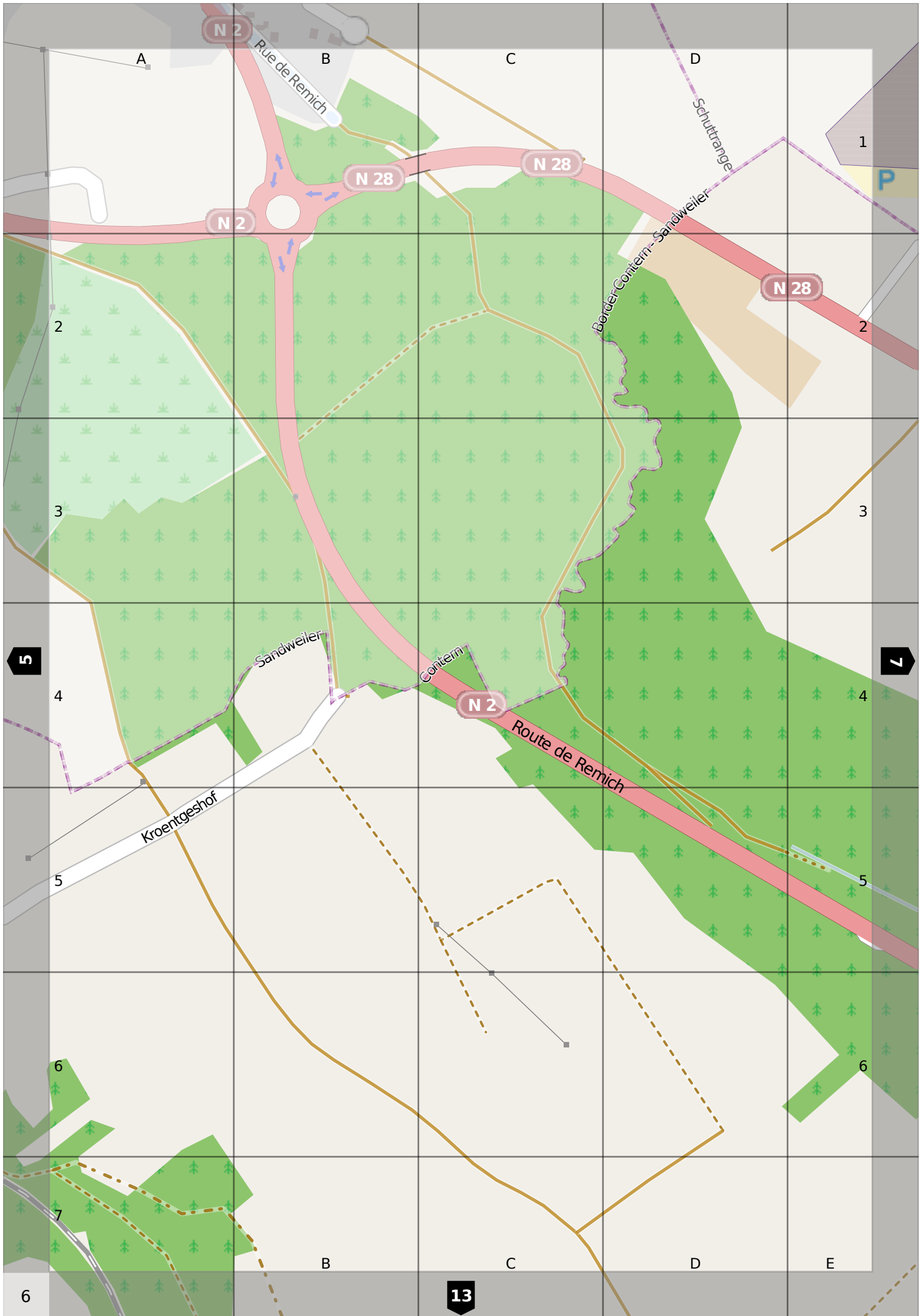
12

B

C

D

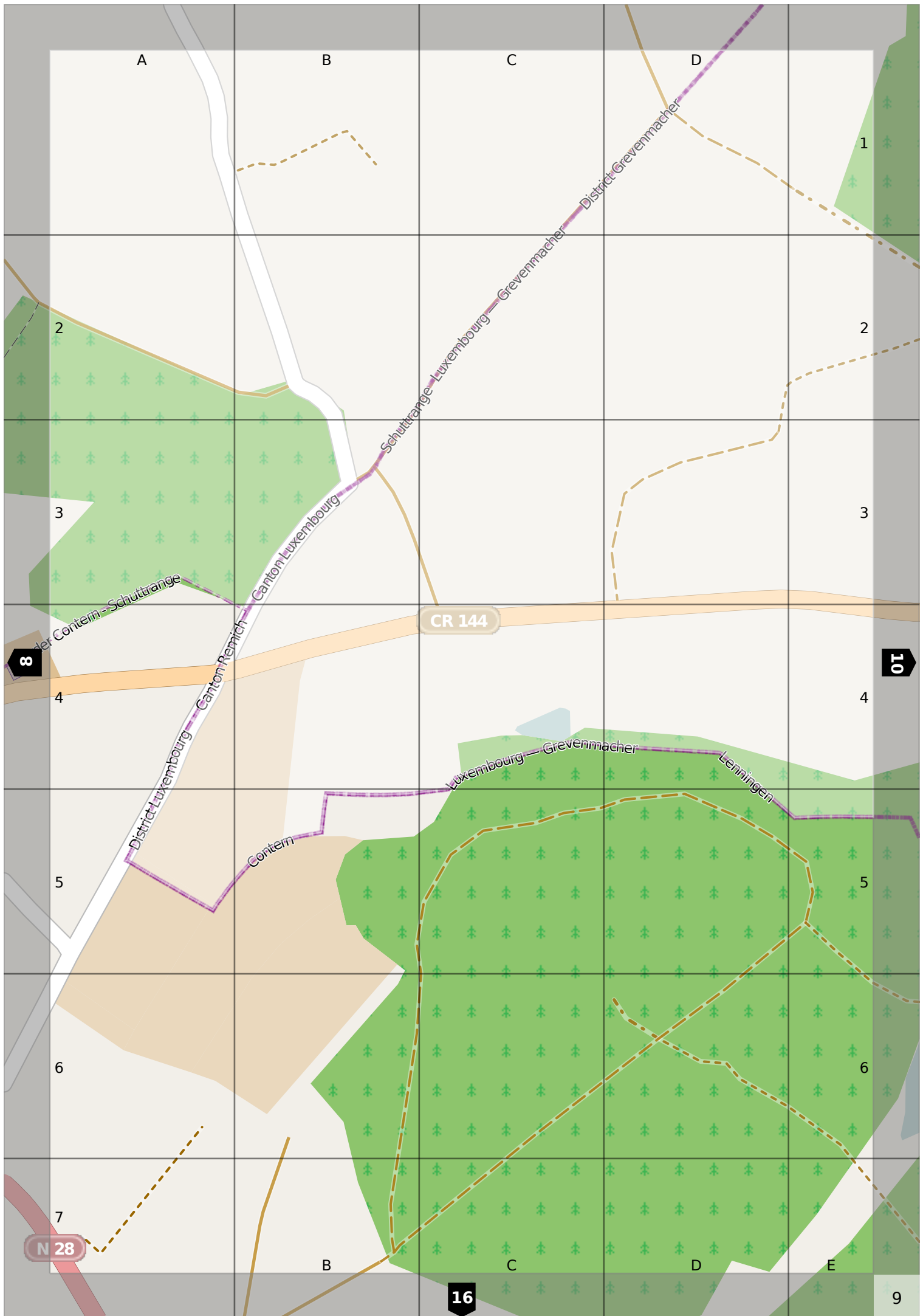
E

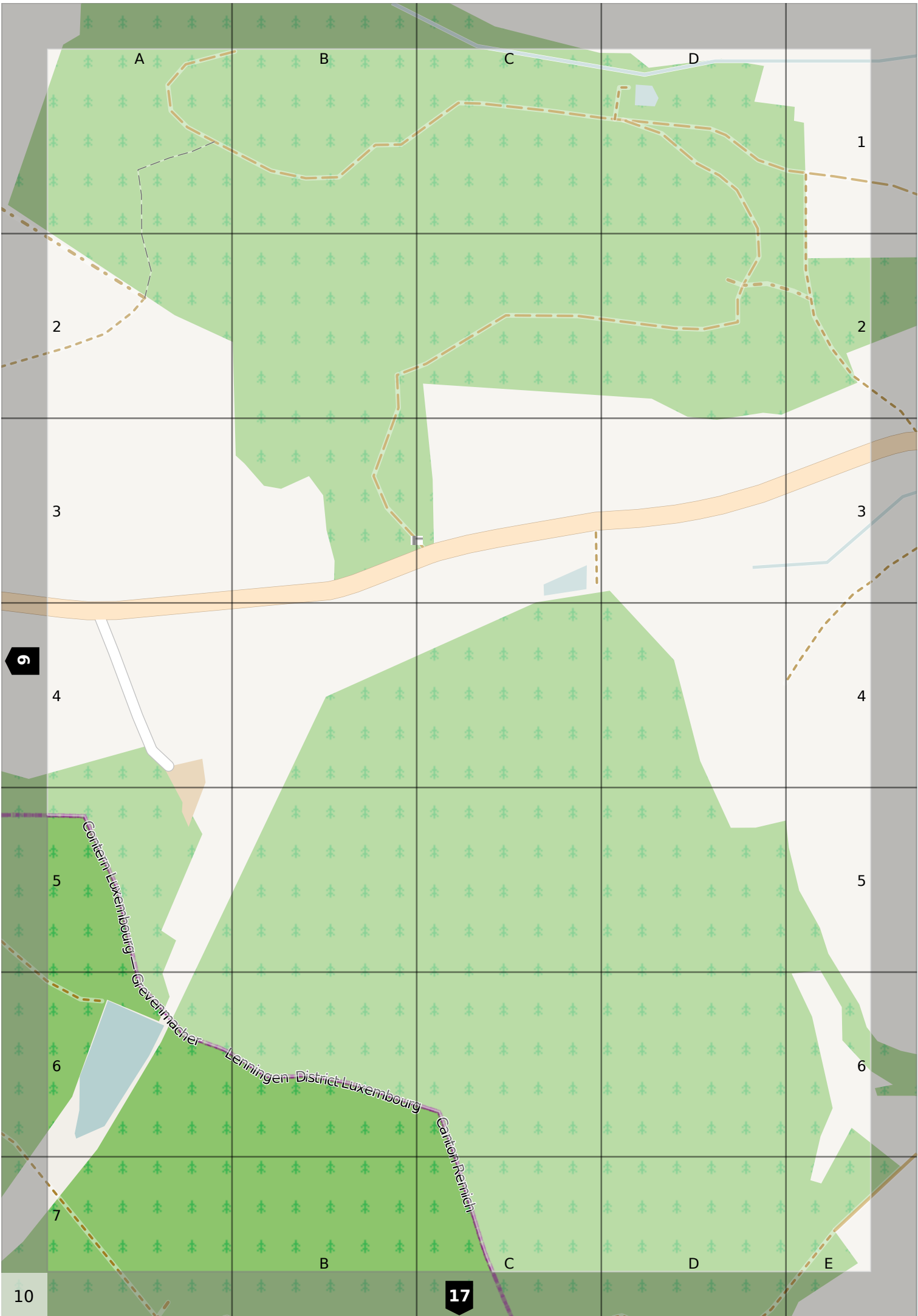


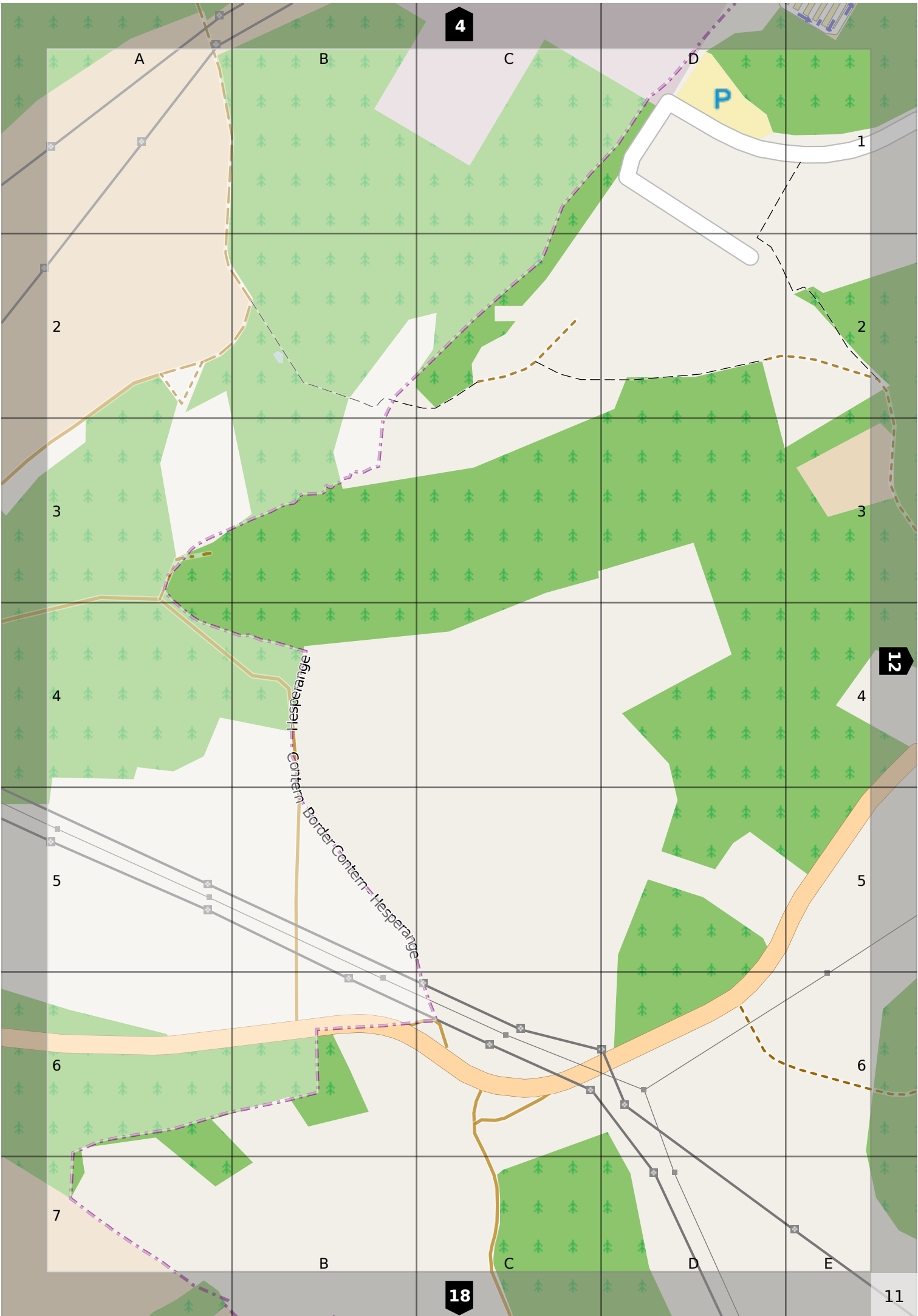












4

A

B

C

D

P

1

2

2

3

3

4

4

5

5

6

6

7

12

11

18

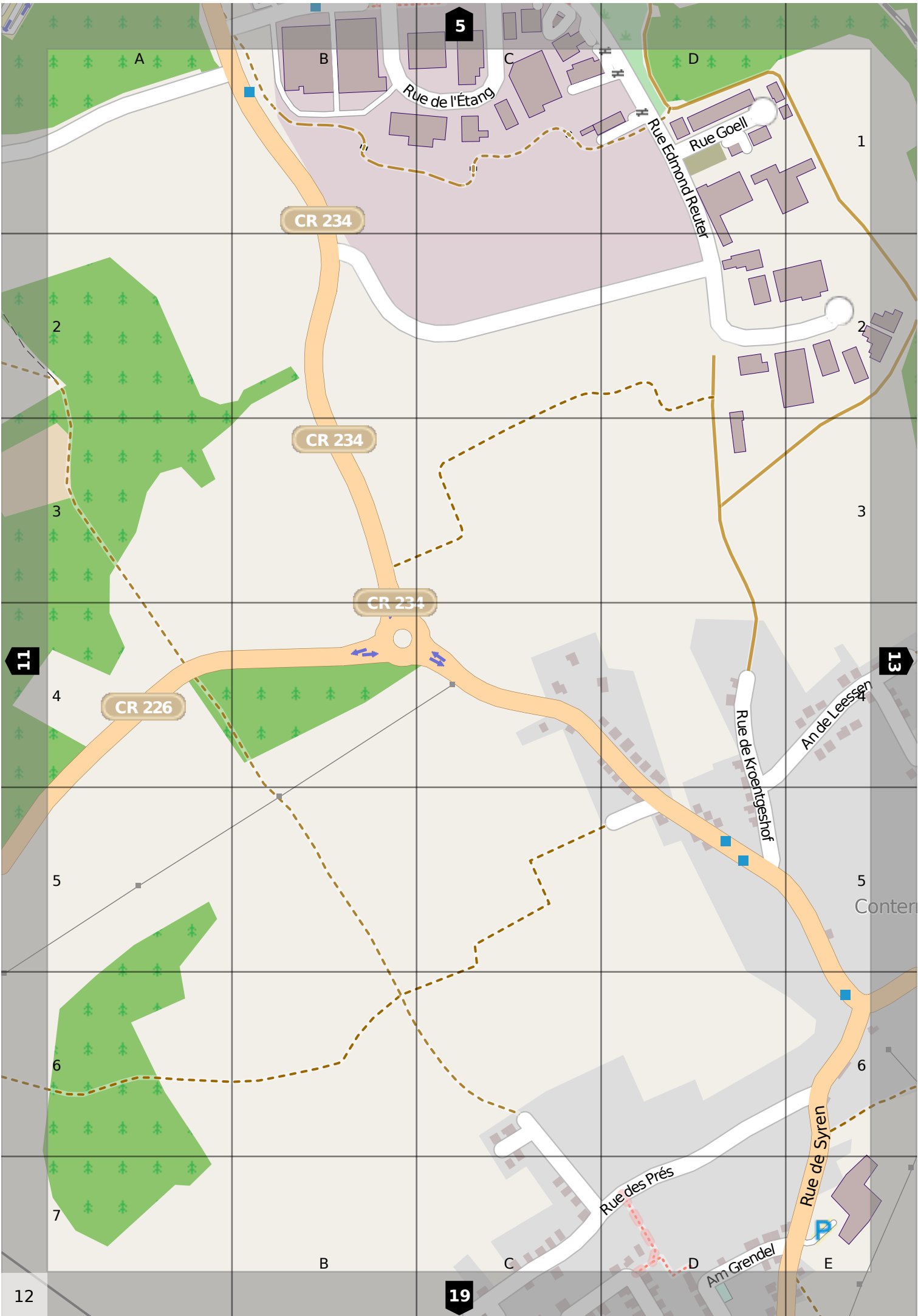
B

C

D

E

Hesperange  
Contem-Border-Contem-Hesperange



5

A

B

C

D

1

CR 234

Rue de l'Étang  
Rue Goell  
Rue Edmond Reuter

2

CR 234

3

CR 234

11

13

CR 226

4

5

5

Conten

6

6

7

Rue des Prés

Rue de Syren

B

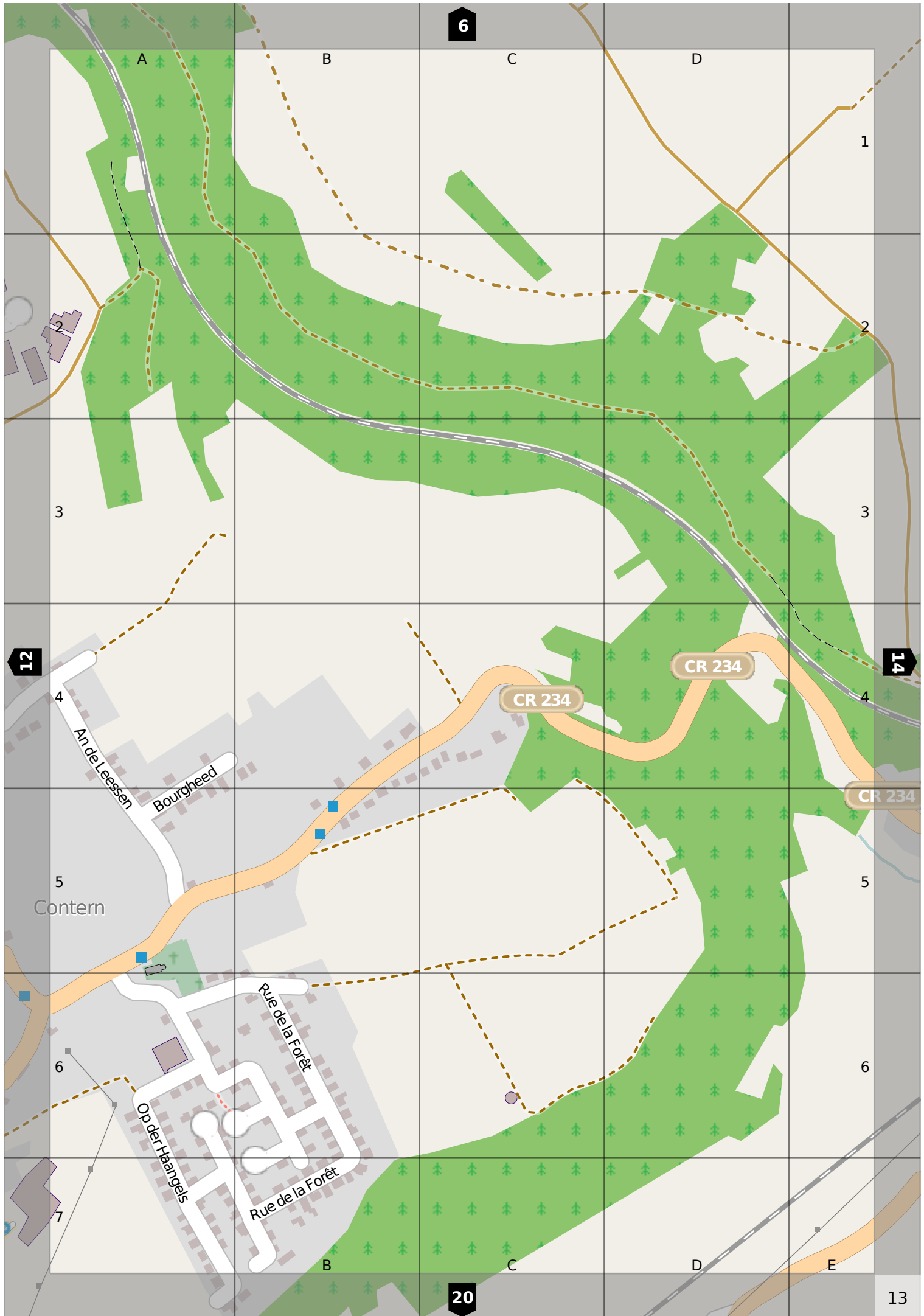
C

An Grendel

E

12

19



6

A

B

C

D

1

2

3

3

12

4

An de Leesen

Bourgheed

CR 234

CR 234

14

4

CR 234

5  
Contern

5

6

Rue de la Forêt

6

7

Op der Hangels

Rue de la Forêt

B

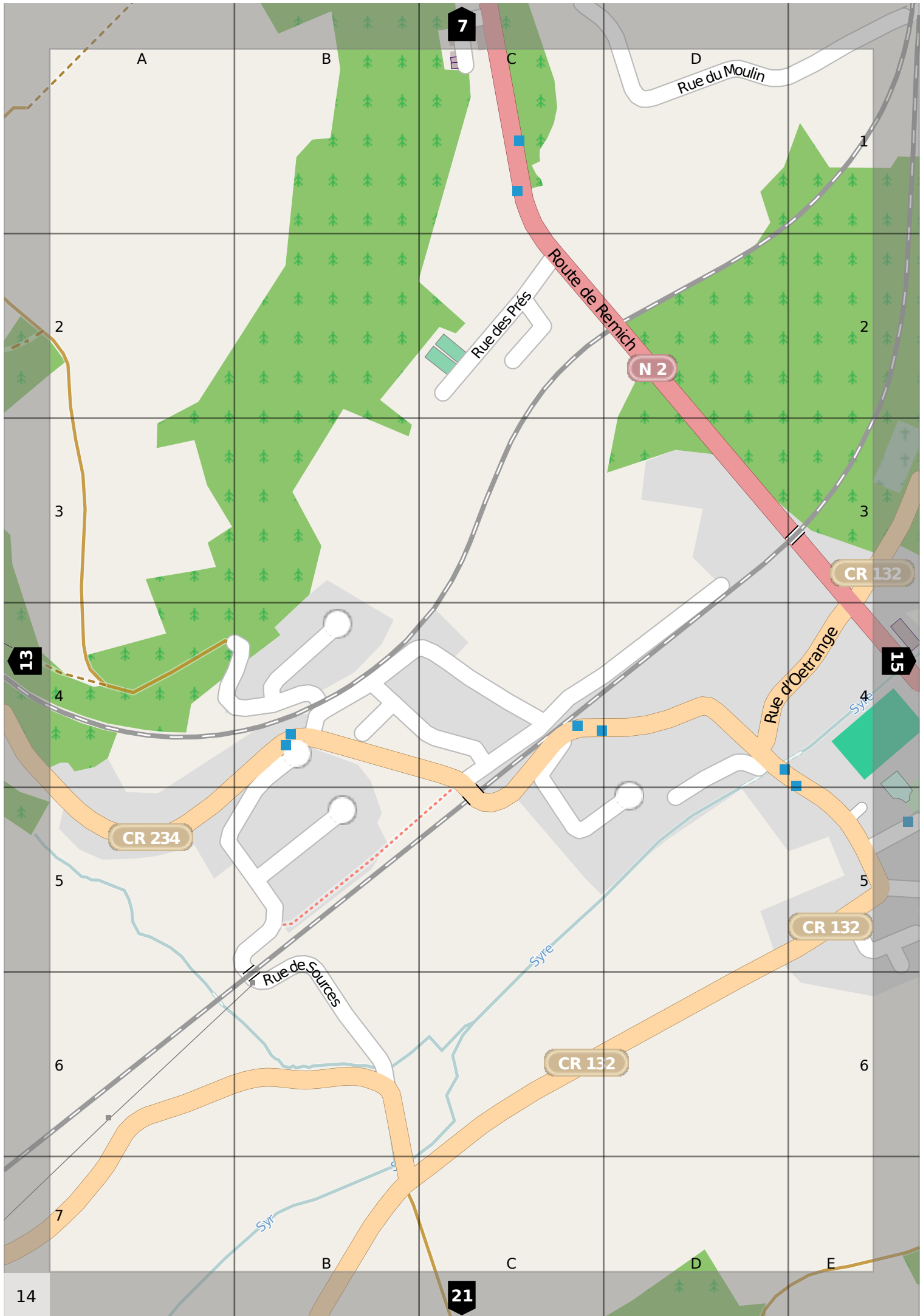
C

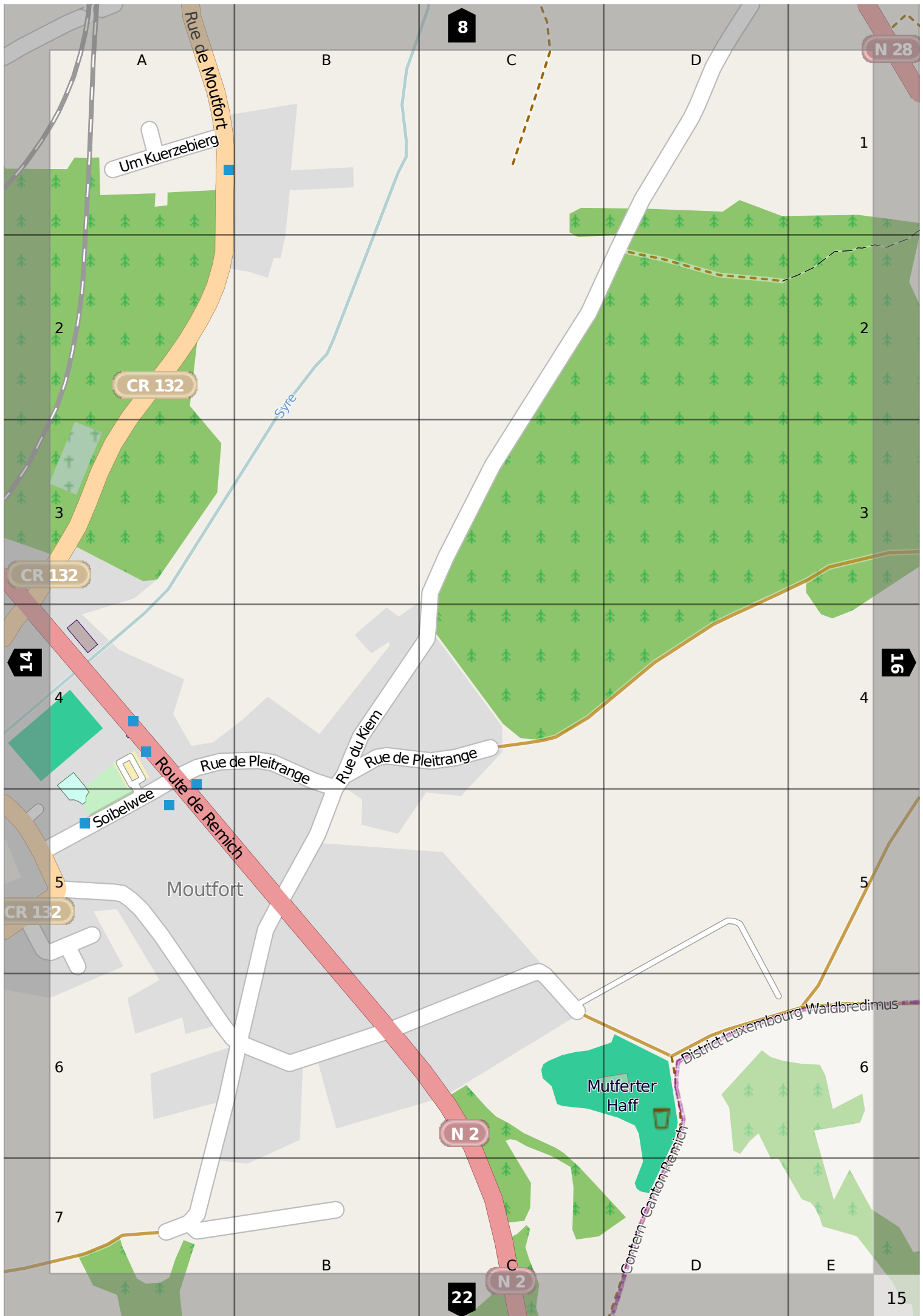
D

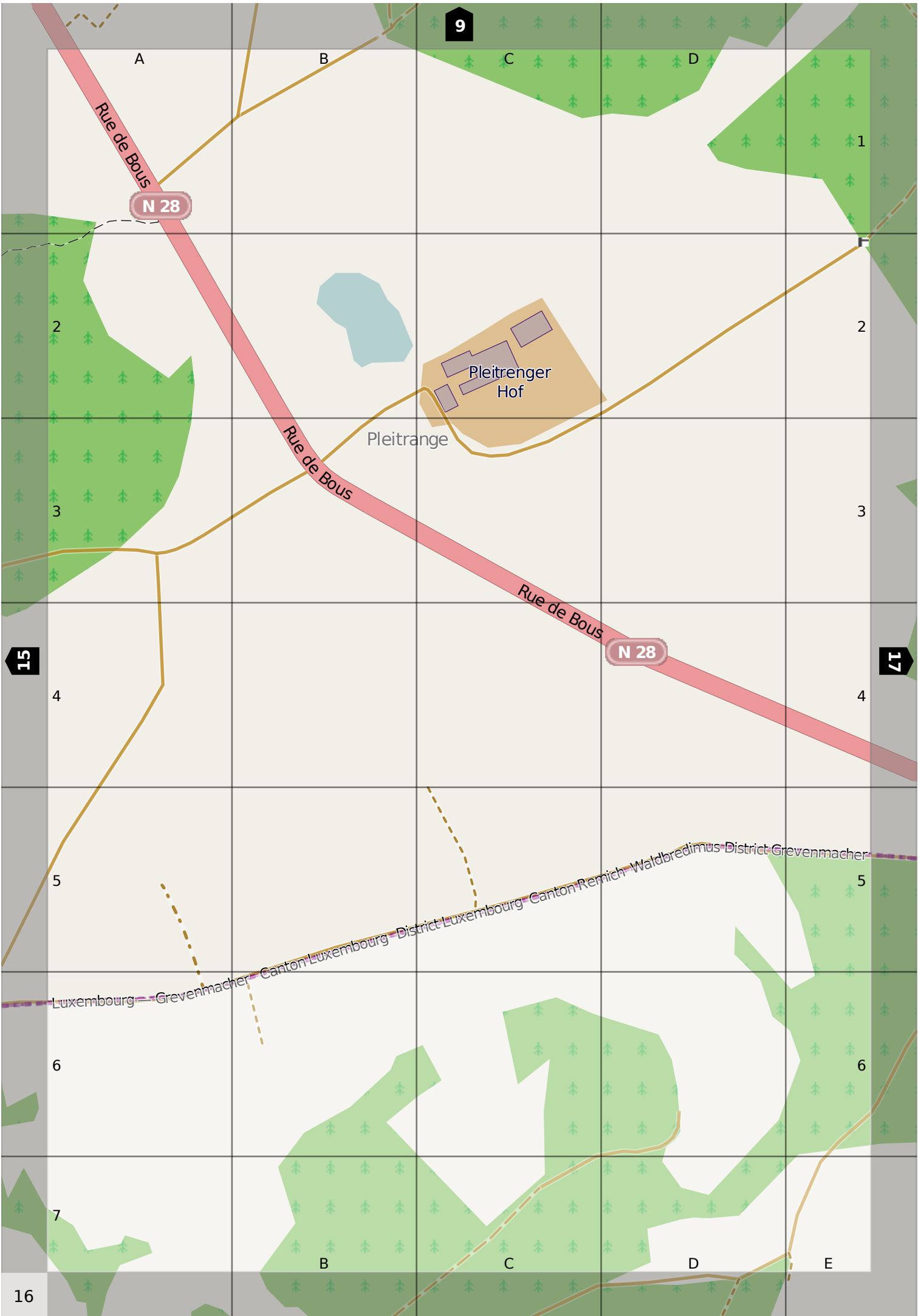
E

20

13







9

A

B

C

D

1

N 28

2

2

Pleitrenger Hof

Pleitrange

3

3

Rue de Bous

Rue de Bous

N 28

15

4

4

17

5

5

6

6

7

B

C

D

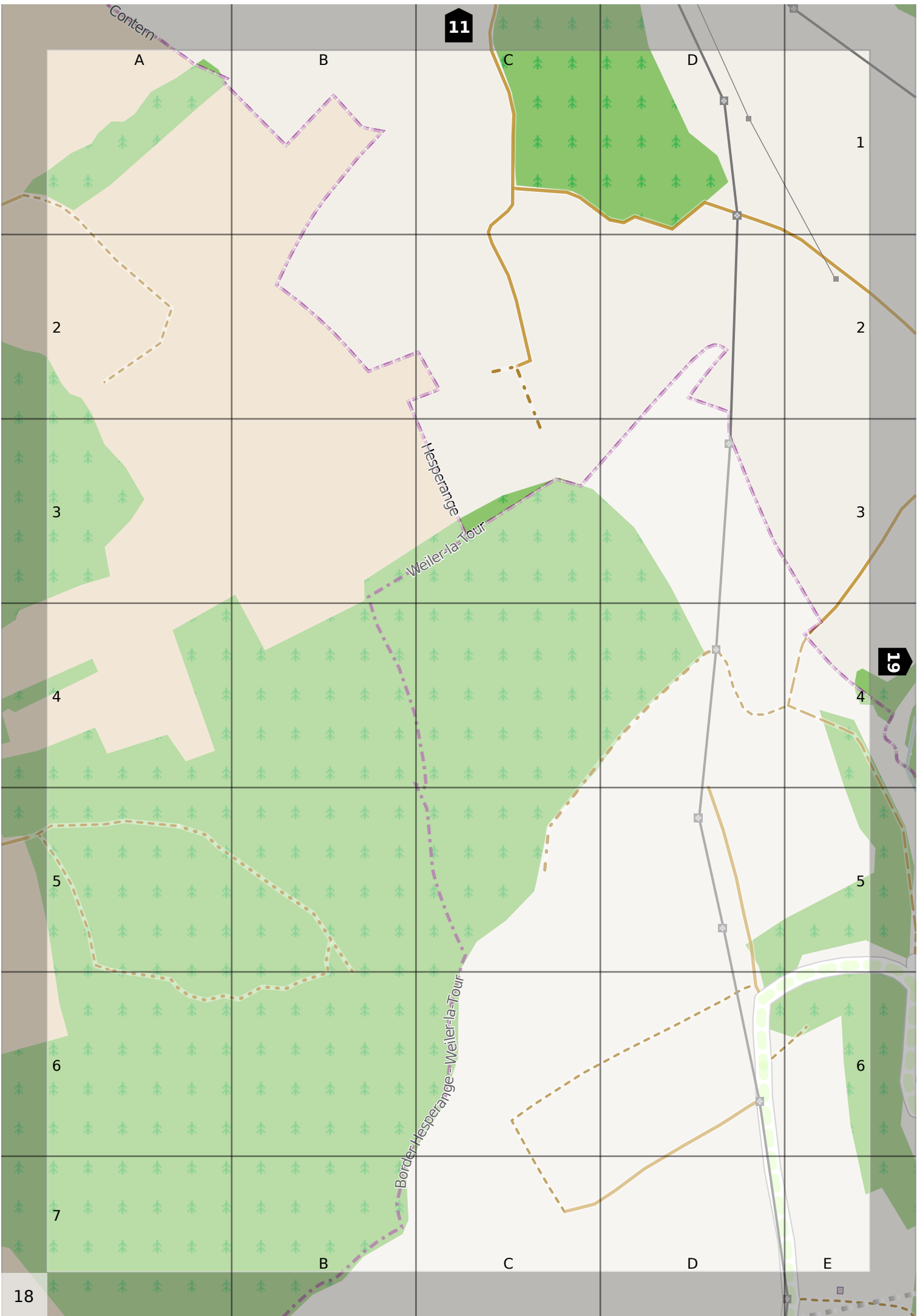
E

16

Luxembourg - Grevenmacher - Canton Luxembourg - District Luxembourg - Canton Remich - Waldbredimus - District Grevenmacher







11

19

A

B

C

D

1

2

2

3

3

4

4

5

5

6

6

7

B

C

D

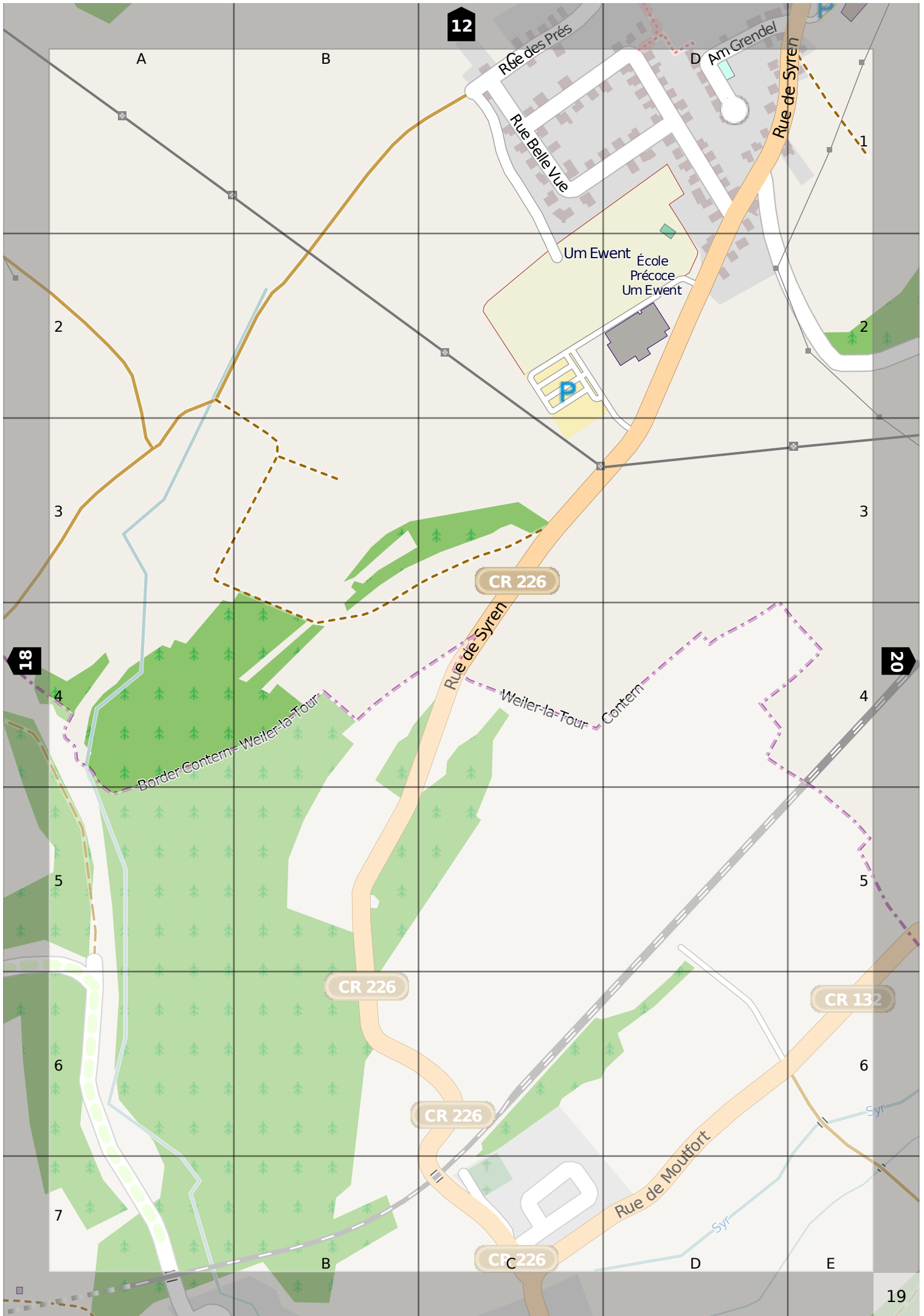
E

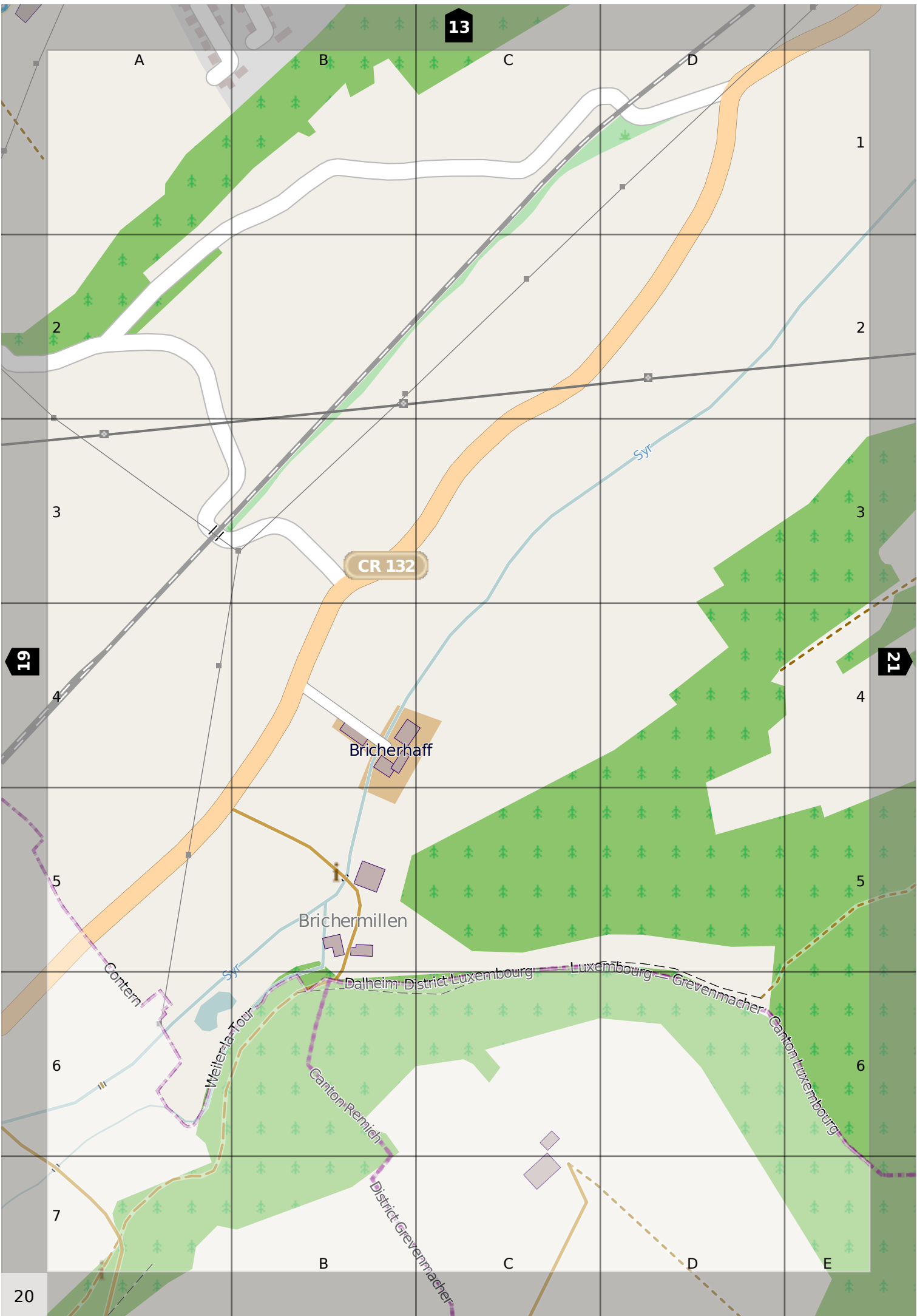
18

Contem

Hesperange  
Weiler-la-Tour

Border Hesperange - Weiler-la-Tour





CR 132

14

A

B

C

D

CR 153

1

2

2

CR 153

Rue de Dalheim

Medingen

An Kündel

Canton Remich

20

22

4

4

Walpeditinus  
District Grevenmacher

5

5

CR 153

6

6

Canton Luxembourg  
District Luxembourg  
Contem

Luxembourg — Grevenmacher — Dalheim

7

B

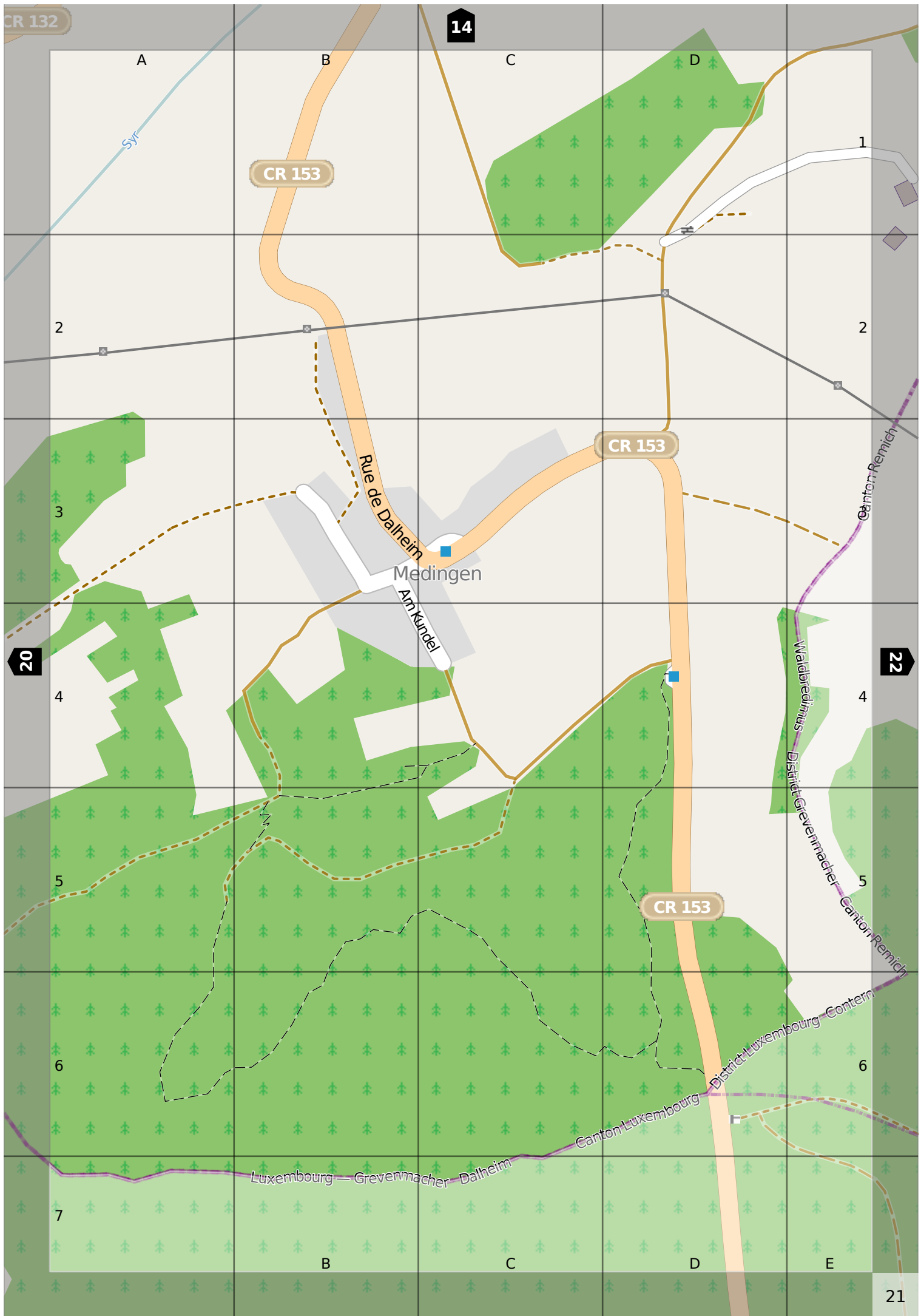
C

D

E

21

Syr





<b>A</b>	
Am For .....	7, E6 8, A6
Am Grendel .....	12, D7-E7 19, D1
Am Kundel .....	21, B3-C4
An de Leessen .....	12, D4-E4 13, A4-A5
<b>B</b>	
Beim Schmilberbuer .....	12, C6-C7
Bourgheed .....	13, A4-A5
<b>C</b>	
Cité Raoul Follereau .....	7, C5-C6
<b>H</b>	
Hoisensprenger .....	7, C6-D5
<b>I</b>	
Im Medenpoull .....	8, A5-B5
<b>K</b>	
Kroentgeschof .....	5, D6-E5 6, A5-B4
<b>M</b>	
Montée d'Oetrangle .....	7, D5-E6 8, A5-A6
Montée d'Oetrangle, rue de Luxembourg .....	6, D1-E2 7, A2-D5
<b>O</b>	
Op der Haangels .....	13, A5-A7 20, A1
Op Horbett .....	7, D5-D6
<b>R</b>	
Route de Remich .....	6, C4-E5 7, A5-C7 14, C1-E4 15, A4-B6
Rue Belle Vue .....	19, C1-D1
Rue de Bous .....	8, B5-E7 9, A7 16, A1-E4 17, A4-D7
Rue de Canach .....	8, A5-D4
Rue de Chaux .....	5, A5-D6
Rue de Dalheim .....	21, B2-C3
Rue de Kroentgeschof .....	12, D4-D5
Rue de la Chapelle .....	21, B3-C3
Rue de la Forêt .....	13, A6-B7
Rue de la Gare .....	8, A3-A5
Rue de l'Église .....	8, A6-B6
Rue de l'Étang .....	5, B7-C7 12, B1-C1
Rue de Luxembourg .....	15, B6-C7 22, C1-C2
Rue de Moutfort .....	8, A5-A7 15, A1-A3
Rue de Pleitrangle .....	15, A4-C4
Rue de Sources .....	14, B5-B6
Rue des Prés .....	12, C7-E6 14, C2

Rue de Syren .....	12, E6-E7 19, C4-E1
Rue d'Oetrangle .....	14, D4-E3 15, A3
Rue du Chemin de Fer .....	7, D5-E5 8, A3-A5
Rue du Kiem .....	15, B5-C3
Rue du Moulin .....	7, C6-E7 8, A7 14, D1-E1
Rue du Pont .....	8, A6
Rue Edmond Reuter .....	5, A7-D7 12, D1-E2
Rue Goell .....	12, D1
Rue Paul Medinger .....	12, C6

<b>S</b>	
Schwarze Wee .....	12, D7 19, D1
Sentier de la Résistance et de la Jeunesse Sacrifiée 1940 - 1945 .....	5, B7 12, B1-D1
Soibelwee .....	14, E5 15, A4-A5

<b>T</b>	
Trengen Knapp .....	8, A5-A6

<b>U</b>	
Um Kuerzebierg .....	15, A1

<b>W</b>	
Woellemslach .....	14, C2

<b>Education</b>	
École Précoce Um Ewent .....	19, D2
Maison Relais Contern .....	19, D2
Um Ewent .....	19, C2

<b>Public buildings</b>	
d'Eiter Post .....	8, A4

<b>Villages</b>	
Brichermillen .....	20, B5
Eitermillen .....	7, C6
Pleitrangle .....	16, B3