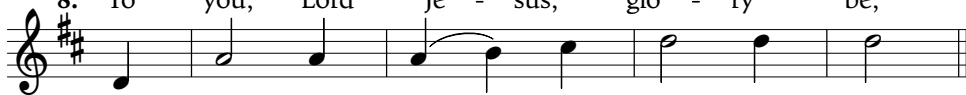
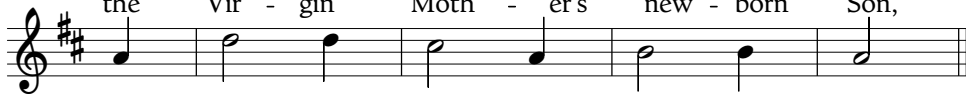




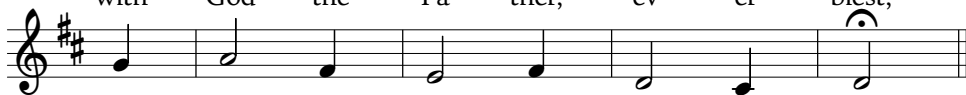
1. From lands be - neath the ris - ing sun,
 2. The hal - lowed Au - thor of the world
 3. Pure grace from heav - en en - tered then
 4. The home of this pure heart be - came,
 5. She brought to birth her ho - ly child,
 6. He lay on straw with no com - plaint,
 7. The hosts on high ex - ult with joy
 8. To you, Lord Je - sus, glo - ry be,



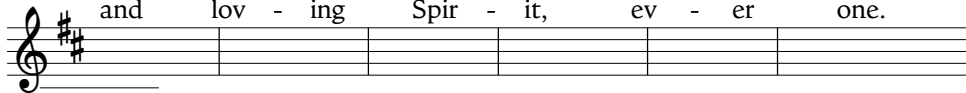
through all the com - pass of the earth,
 a ser - vant's bod - y has as - sumed,
 the Moth - er's womb, both sealed and closed;
 with sud - den pow'r, the shrine of God;
 whose ad - vent Ga - bri - el pro - claimed,
 not shrink - ing from a man - ger bed;
 and an - gels sing to God with praise;
 the Vir - gin Moth - er's new - born Son,



now let us sing to Christ the Lord,
 that lib - er - at - ing flesh by flesh
 the clois - ter of this maid - en bride
 a vir - gin still, she knew not man
 whose pres - ence John per - ceived with joy
 an in - fant's share of milk he drank,
 the shep - herds won - drous - ly be - hold
 with God the Fa - ther, ev - er blest,



the Vir - gin Mar - y's new - born Son.
 he should not lose what he has made.
 bore se - crets she could not have known.
 and by a word con - ceived her Son.
 and leapt with - in his moth - er's womb.
 while in his care he fed the birds.
 the Shep - herd, Mak - er of all things.
 and lov - ing Spir - it, ev - er one.



A musical score for the word "Amen" in G major. The notation is on a single staff with a treble clef and a key signature of one sharp (F#). The melody consists of six notes: G4 (quarter), A4 (quarter), B4 (quarter), A4 (quarter), G4 (quarter), and F#4 (half). A slur covers the first four notes (G, A, B, A), with the letter "A" positioned below the first note. The final note (F#) is followed by the word "men." below it.