

Barré-styles

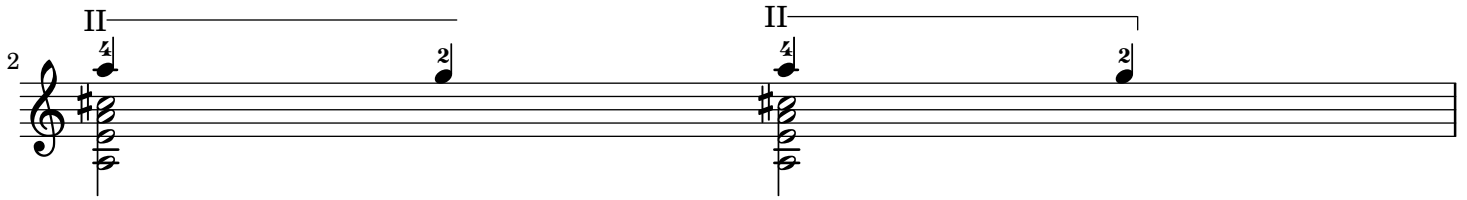
Inner/multiple barre, Item



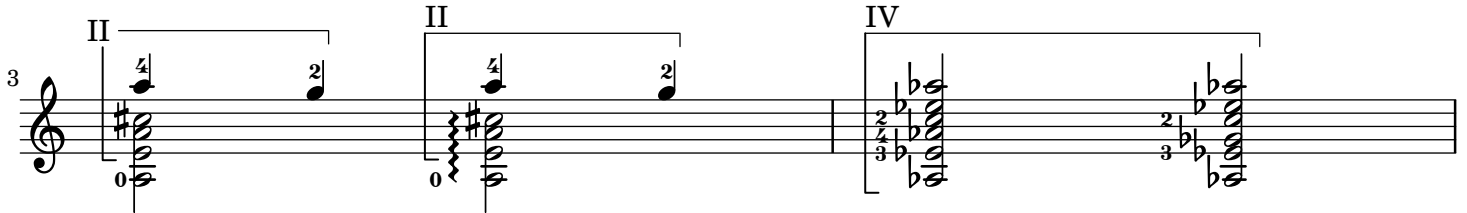
Simple horizontal line, Spanner.

The fret label may contain C, B or their slashed versions C resp. B as well as settings for the strings to cover like 3/6 or p.e. II_3 . [Not demonstrated below.]

At the end a hook may be printed.



Horizontal line with vertical line and horizontal hook at start, Spanner.



Same, but for a single chord (spanner with hidden graces)

