

Export:

1. No warning about non-existent HTML images folder
GNUBG should offer to generate them when asked to export
2. The installation should generate the images automatically and point to that location if possible
3. No apparent way to use the current board design when generating html images. I always get the (ugly) default.
4. Not clear how to get rid of ugly transparency in default html images, or in default board
5. default board and HTML images are ugly. surly we can choose a nicer default.
6. Text in HTML export is not aligned.

Game number 4

The score (after 3 games) is: gnuBG 4, Joseph 1 (match to 5 points, post-Crawford play)

Match Information

Date July 07, 2007

Move number 58: Joseph to play 22

```

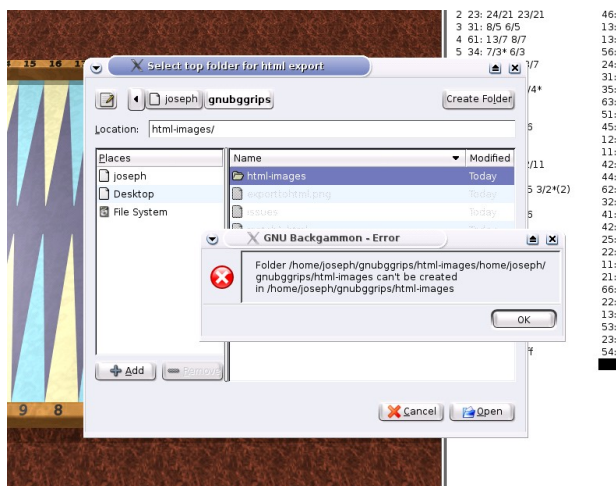
+-13-14-15-16-17-18+---+19-20-21-22-23-24+
|'. . . . .|1|  |' 2X3X4X3X|
|'. . . . .|1|  |2 2
|'. . . . .|1|  |30402030' 30|
+-12-11-10-9-8-7+---+6-5-4-3-2-1+
  
```

Pip counts: gnuBG 28, Joseph 58
Position ID: 5a8a8c9a2a Match ID: d49a2a2a

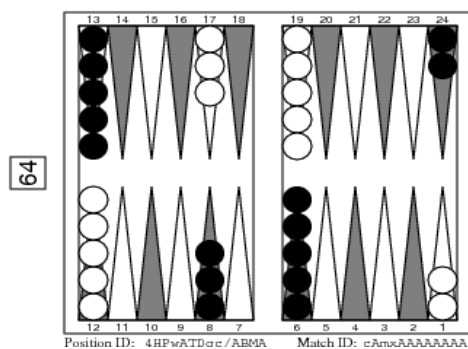
Output generated Sat Jul 7 10:09:22 2007 by GNU Backgammon 0.16-devel (HTML Export version 1.180)

W3C CSS

7. After changing the HTML images style and trying to re-generate, I got this error message. (note that I set the images directory to a full path starting at root)

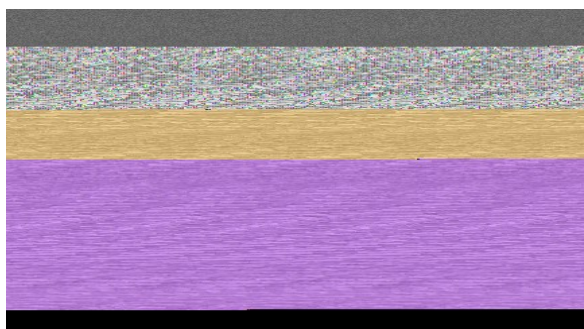


8. After changing the style to FIBS/BBS, I get garbled text when importing to HTML
9. EPS export is missing the dice,cube, score, ID etc



10. Export to PNG core dumps

```
(gnubg:25669): GdkGLExt-WARNING **: cannot create GdkGLPixmap
(gnubg:25669): GdkGLExt-CRITICAL **: gdk_gl_context_new: assertion
`GDK_IS_GL_DRAWABLE (gldrawable)' failed
(gnubg:25669): GdkGLExt-CRITICAL **: gdk_gl_drawable_gl_begin: assertion
`GDK_IS_GL_DRAWABLE (gldrawable)' failed
(gnubg:25669): GdkGLExt-CRITICAL **: gdk_gl_drawable_gl_begin: assertion
`GDK_IS_GL_DRAWABLE (gldrawable)' failed
```



WritePNG failed!(Joseph) Segmentation fault (core dumped)

11. When selecting to save a position from the drop-down menu, it would be nice if the non available available are not shown (or at least grayed out, i.e not selectable).
12. As a consequence of all of the above, there is no easy way to pick positions for inclusion in a document. (say an open-office document)